



RADICAL RENOVATIONS

Inspiring Architectural Makeovers

Edited by Beth Browne

images
Publishing

Published in Australia in 2013 by
The Images Publishing Group Pty Ltd
ABN 89 059 734 431
6 Bastow Place, Mulgrave, Victoria 3170, Australia
Tel: +61 3 9561 5544 Fax: +61 3 9561 4860
books@imagespublishing.com
www.imagespublishing.com

Copyright © The Images Publishing Group Pty Ltd 2013
The Images Publishing Group Reference Number: 1008

All rights reserved. Apart from any fair dealing for the purposes of private study, research, criticism or review as permitted under the Copyright Act, no part of this publication may be reproduced, stored in a retrieval system or transmitted in any form by any means, electronic, mechanical, photocopying, recording or otherwise, without the written permission of the publisher.

National Library of Australia Cataloguing-in-Publication entry:

Title:	Radical renovations : inspiring architectural makeovers / edited by Beth Browne.
ISBN:	9781864704907 (hbk.)
Subjects:	Dwellings – Remodeling. Dwellings – Repair and reconstruction.
Other Authors/Contributors:	Browne, Beth.
Dewey Number:	728.0286

Edited by Beth Browne

Designed by The Graphic Image Studio Pty Ltd, Mulgrave, Australia
www.tgis.com.au

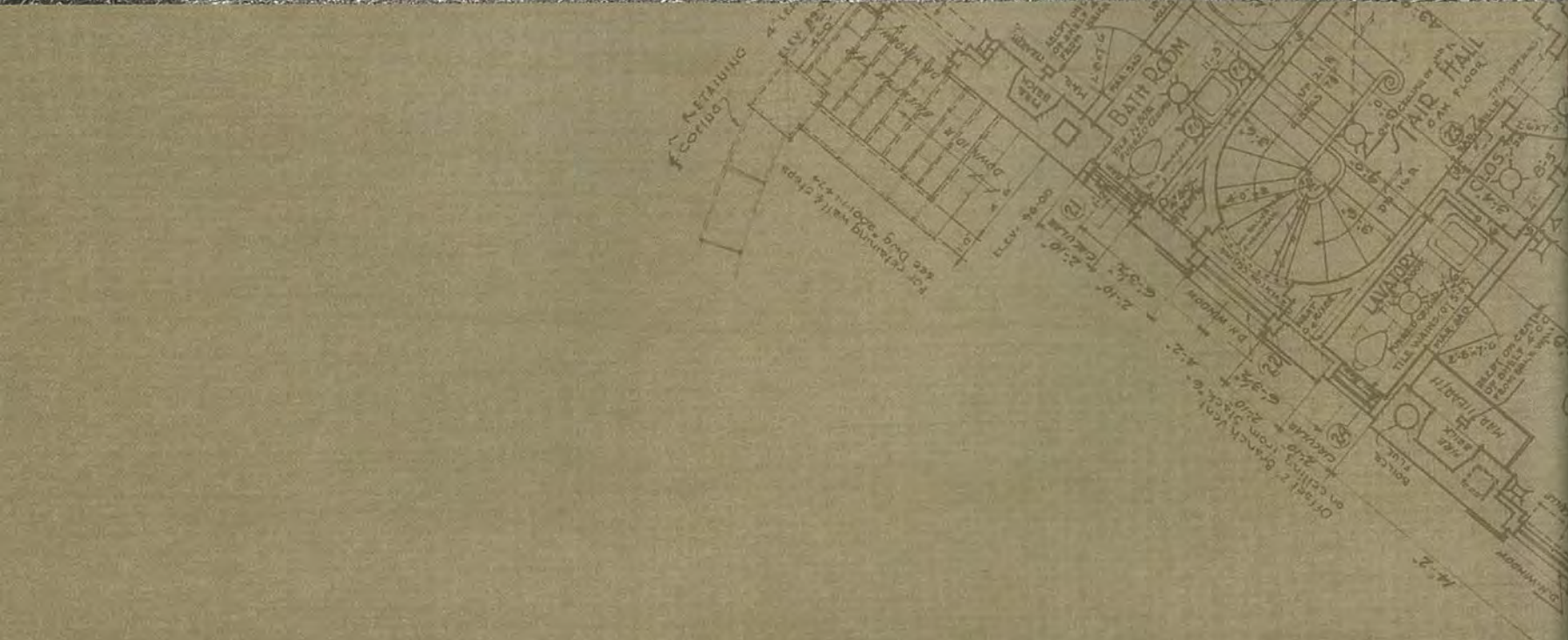
Pre-publishing services by United Graphic Pte Ltd, Singapore

Printed by Everbest Printing Co. Ltd., in Hong Kong/China on 120gsm Sun Woodfree

IMAGES has included on its website a page for special notices in relation to this and our other publications.
Please visit www.imagespublishing.com.

CONTENTS

7	Introduction	74	House in Midtown Toronto Canada
10	Albatross Renovation Australia	78	House S Germany
14	Artist Studio and Residence USA	82	Howland House Canada
18	Birchgrove House Australia	86	Ideagarden USA
22	Can Manuel d'en Corda Spain	90	Mountford Road Australia
26	Cape Cod Modern USA	94	Pliaconis Residence USA
30	Cape Cove House United Kingdom	98	Residence C Australia
34	Casa Amalia Spain	102	Sajima Weekend House Japan
38	Castello Colleoni Italy	106	Sasso House Chile
42	Cooper Park House Australia	110	Small Haven Australia
46	Corten House Canada	114	Stable Acre United Kingdom
50	D Hotel Belgium	118	Swan Street Residence Australia
54	Duggan Residence USA	122	Tennyson Point Residence Australia
58	Elm and Willow House Australia	126	The Round Tower United Kingdom
62	Gibbon Street House Australia	130	Twenty Five Lusk USA
66	Gramercy Town House USA	134	Vallejo House Spain
70	Home Farm United Kingdom	138	Index of Architects





The Corten House is located on a quiet residential street of postwar houses, where typical elevations include three-sided bay windows with views to the living room beyond and canopied front porches where residents commonly mingle with their neighbours. The original plan included small, compartmentalised rooms with little access to natural light and no connection to the outdoors.

Originally a home for a family of three, the house now accommodates the blending of two families. Rather than moving, the clients chose to adapt the house to suit the needs of their growing family. The newly renovated home includes a reworking of the front elevation, an extensive interior renovation and a two-storey addition at the rear of the house. The modern aesthetic of the design is a radical addition to the neighbourhood, but the new house fully respects the existing streetscape and the scale of the neighbouring homes.

The original bay window was replaced with a sculptural box of rusted Corten steel and the typical peaked roof over the adjacent front porch was replaced with a simple rectilinear volume supported by one steel column. A concrete bench was included in the new front porch, enabling the tradition of socialising with neighbours to continue. Extensive glazing at the rear elevation provides a direct view from the new front entry to the landscaped garden beyond, blurring the boundaries between inside and outside.



The original living room at the front of the house was replaced with a new dining room that is separated from the adjacent kitchen with a full-height wall, allowing passage on either side. The newly extended ground floor contains a large open living space, which doubles in size when the sliding glass doors are opened to a new outdoor living room. A double-sided wood-burning fireplace and custom built-in millwork help to create zones in the open floor plan and link adjacent spaces. At the rear of the newly extended second floor, a master suite provides a private retreat for the parents. A second stone fireplace located at the foot of the bed is expressed at the exterior elevation and a small glass balcony connects the bedroom to the outdoors.

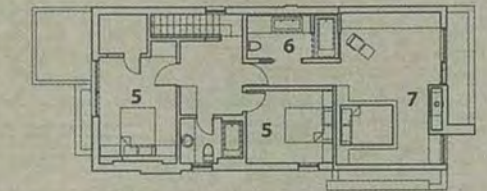


A consistent material palette was used throughout the house in both the exterior and interior spaces. Cues were taken from the existing house, including the exposed red brick in the original kitchen. Thus the old was successfully married with the new, making the renovation and addition seamless.

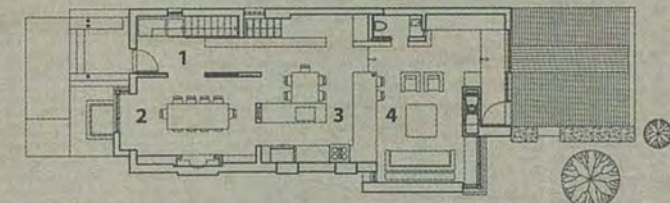


CINDY RENDELY ARCHITEXTURE

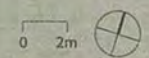
PHOTOGRAPHY: Shai Gil



Second floor (after)



First floor (after)



- 1 Entry
- 2 Dining
- 3 Kitchen
- 4 Living
- 5 Bedroom
- 6 Master ensuite
- 7 Master bedroom