

TITLE ARCHITECTS' SKETCHBOOKS

EDITED BY WILL JONES

FOREWORD BY NARINDER SAGOO

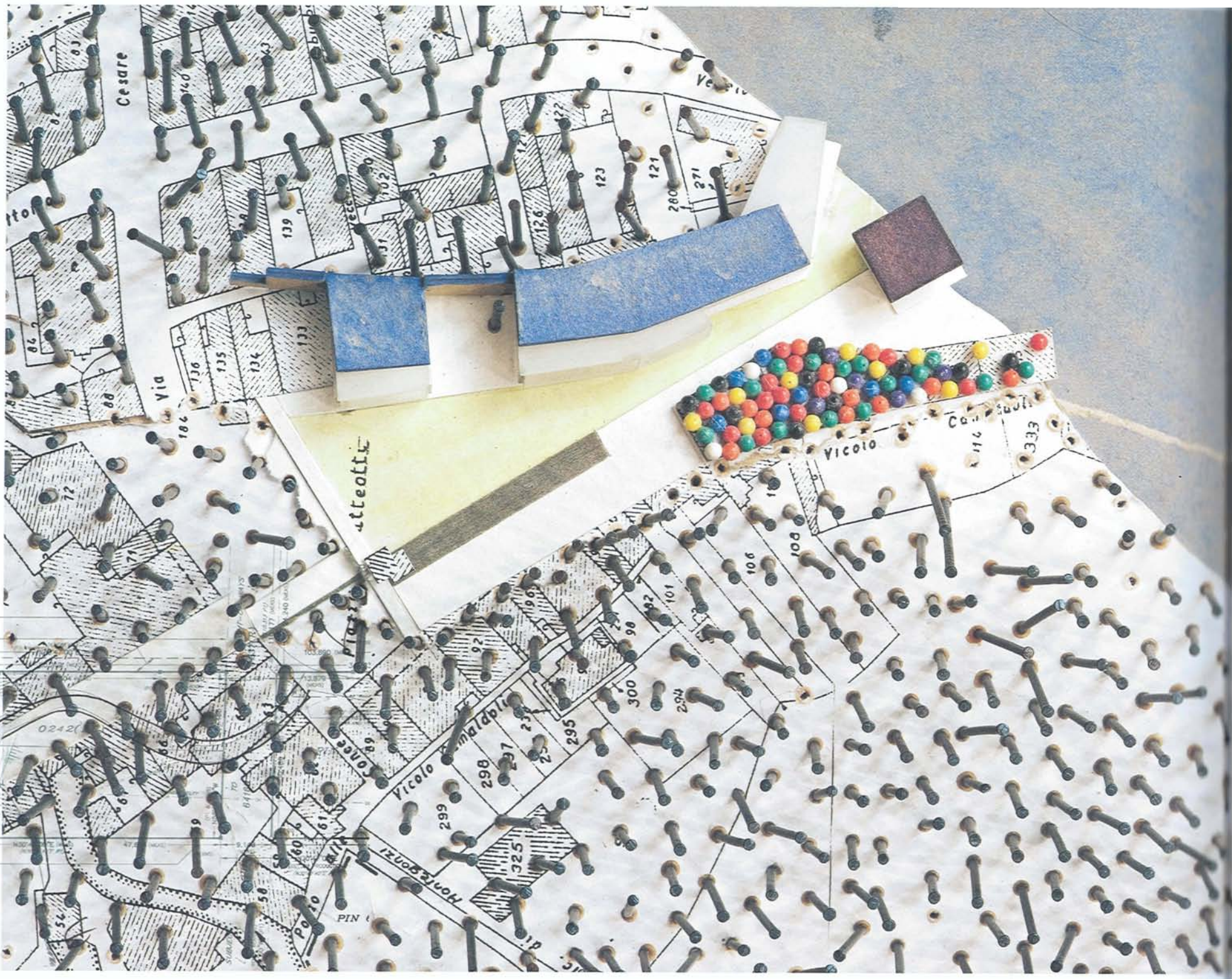


ARCHITECTS'  
SKETCHBOOKS

---

Will Jones

METROPOLIS BOOKS



2/3

*mistake*

*kidd above 2 not sticky*



## CINDY RENDELY ARCHITECTURE

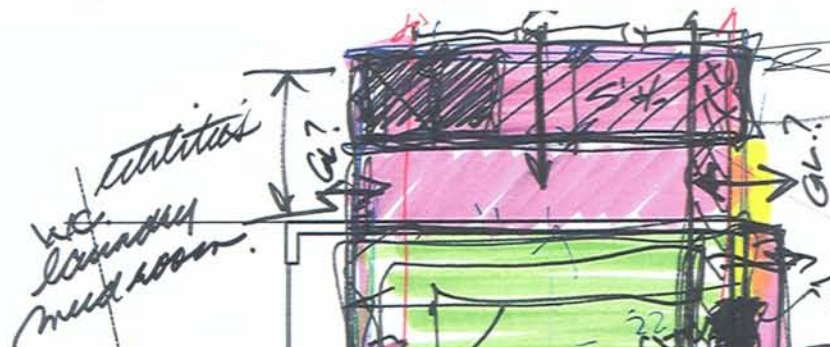
'Because I was a goldsmith and jeweller before I became an architect I am very comfortable working with my hands,' says Cindy Rendely, principal of Toronto-based practice Cindy Rendely Architecture. 'Therefore, model-making and sketch models interest me most when I am exploring an idea in 3D during the early stages of a project.'

Rendely makes small models from cardboard, paper and Styrofoam, whether the project is a scale model of a new house or an entire site plan. She also sketches using coloured pencils and graphite when conceiving ideas for new works. She prefers this 'hands-on' approach of exploration to 3D computer modelling, which does enter the design process, but at a later stage.

'Models allow me to see quickly for myself, and to illustrate rapidly and clearly to my clients ideas in 3D rather than 2D only,' she explains. 'They allow for interesting exploration and I can manipulate card and paper freely to show options during meetings, if necessary.'

Rendely expects to have a clear idea of the massing and siting of buildings following her initial model-making process. These ideas can then be developed further once she has reviewed them with the client.

'I like to think that 100% of my concept ideas get taken through into the completed project,' says Rendely. 'I keep original sketch models and drawings close at hand, near my desk the entire time that I am developing a project so that I do not lose the original "seed"—it allows me to remember my starting point.'



no  
laundry  
meat room.

Storage: bikes  
garden equipment  
patio furniture (basement??)

Family room / hang-out

sliders or pivots  
both sides

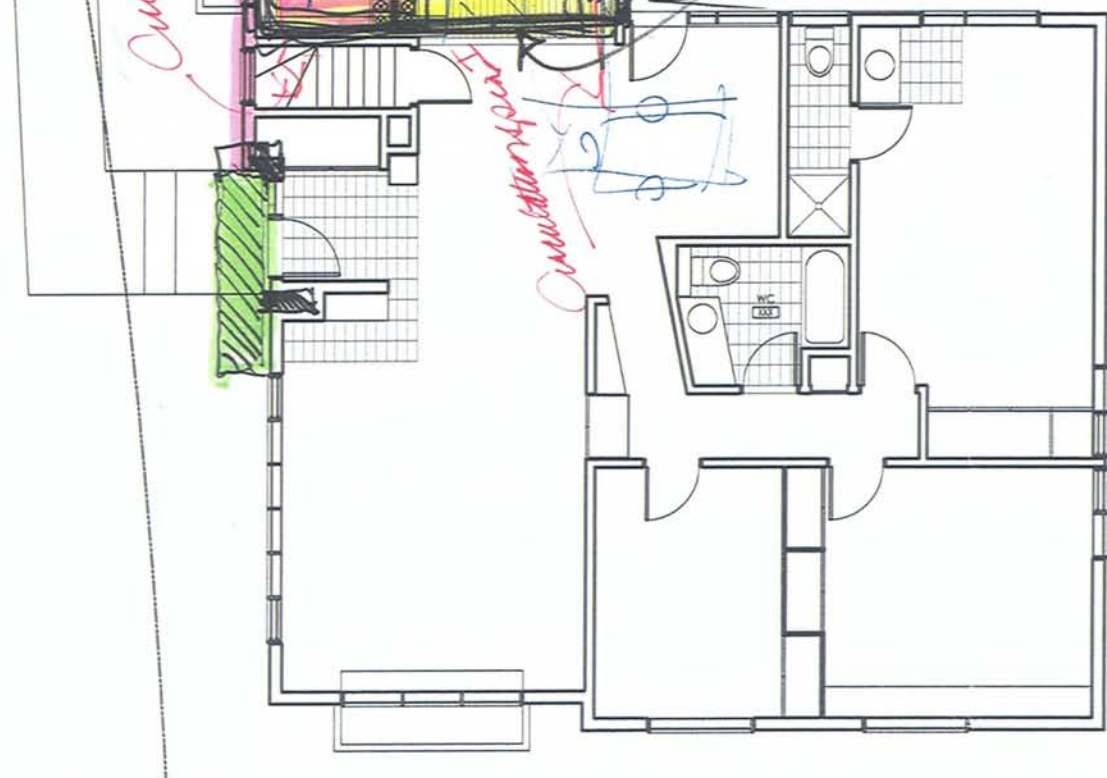
Carport??

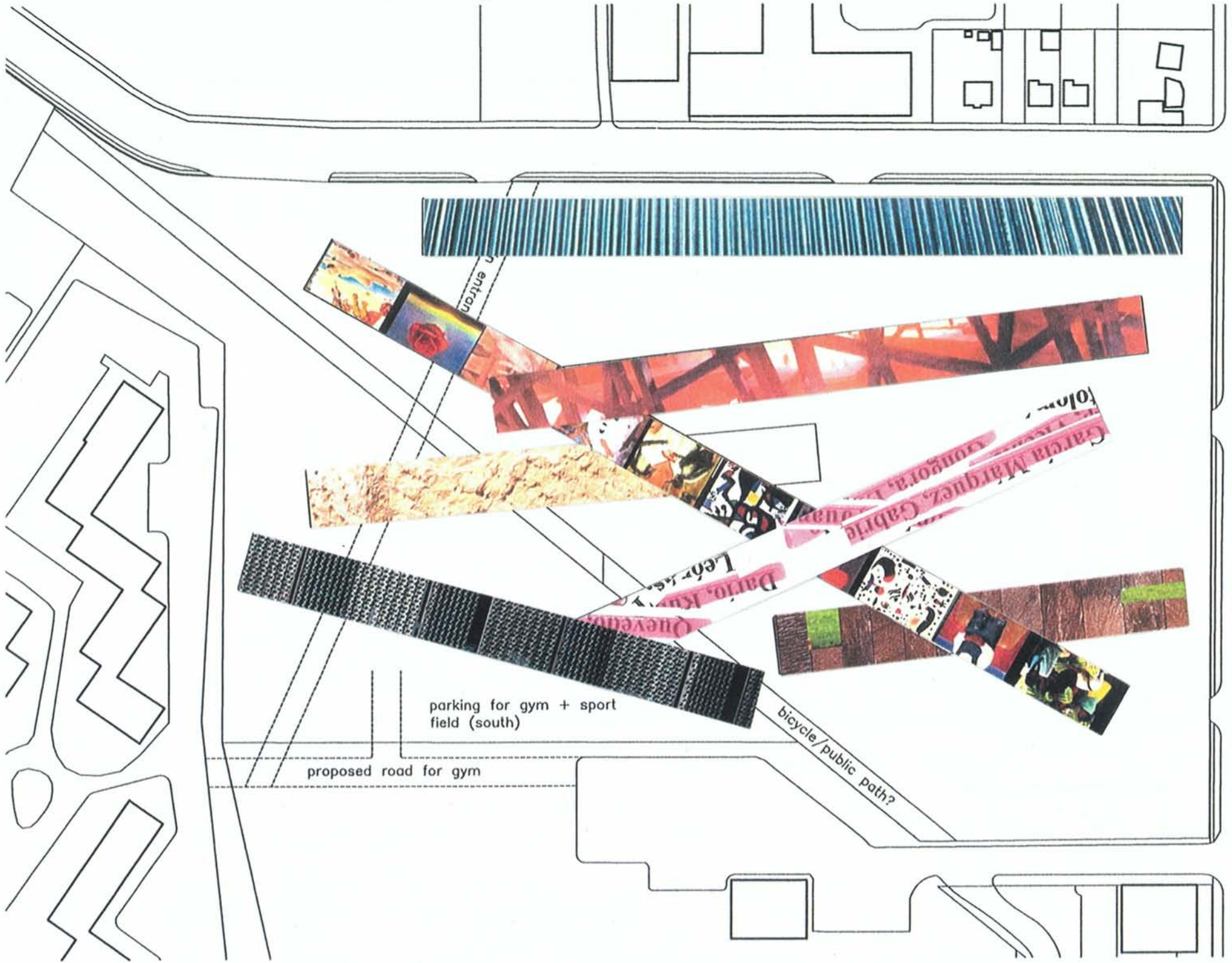
Circulation  
Space II

Floor  
Circulation  
Space I

meat room?? NOISE.

Circulation  
Space II





parking for gym + sport field (south)

proposed road for gym

bicycle/public path?

entrance

Quevedo  
Dario, K...  
Lebr...  
Garcia Marquez, Gabr...  
Comgora, ...  
Colo...

For Stephanie, my picture perfect. —W.J.

First published in the USA in 2011 by  
Metropolis Books, a joint publishing program of:

D.A.P./Distributed Art Publishers  
155 Sixth Avenue, 2nd floor  
New York, NY 10013  
tel 212 627 1999 / fax 212 627 9484  
www.artbook.com

and

Metropolis Magazine  
61 West 23rd Street, 4th floor  
New York, NY 10010  
tel 212 627 9977 / fax 212 627 9988  
www.metropolismag.com



Available through D.A.P./Distributed Art Publishers,  
Inc., New York.

All rights reserved. This book may not be reproduced  
in whole or in part, in any form (beyond copying  
permitted by Sections 107 and 108 of the United  
States Copyright Law, and except by reviewers  
for the public press), without written permission  
from Metropolis Books, c/o D.A.P./Distributed Art  
Publishers, Inc.

Library of Congress Cataloging-in-Publication Data  
is available upon request

ISBN 978-1-935202-46-2

First published in the United Kingdom in 2011  
by Thames & Hudson Ltd, 181A High Holborn,  
London WC1V 7QX

Copyright © 2011 Will Jones

Illustrations copyright © 2011 the individual  
architects, unless otherwise noted.

Printed and bound in China by Toppan Leefung

#### Picture credits

All images supplied by the individual architects,  
unless otherwise noted. Page numbers in bold.

**16–23** All images copyright © www.3deluxe.de **24–29**  
A4 Studio—Kendik Géza **34–37** Agathom Co. (photos  
Paul Orenstein) **48–51** Shigeru Ban Architects Europe  
(CGI); Shigeru Ban (sketches) **116–19** copyright  
© Dorell.Ghotmeh.Tane / Architects **126–29** Images  
copyright © Rand Elliot **168–71** Model photos: John  
Ross; Sketches: Seth Rutt, Hawkins\Brown; All other  
visuals Hawkins\Brown **280–83** carlorattiassociati—  
Walter Nicolino & Carlo Ratti **306–09** SMAQ—  
Architecture Urbanism Research: Sabine Müller,  
Andreas Quednau **338–41** William Mann and Freddie  
Phillipson **342–43** Sketches: Jonathan Woolf; Other  
material: Jonathan Woolf Architects

#### Websites

##### 3deluxe

www.3deluxe.de

##### A4 Studio

www.a4studio.hu

##### Ben Addy

www.moxonarchitects.com

##### Agathom Co.

www.agathom.com

##### Will Alsop

www.alsopsparch.com

##### Architects Atelier Ryo Abe

www.aberyo.com

##### Shigeru Ban

www.shigerubanarchitects.com

##### Julio Barreno

www.juliobarreno.com

##### C. Errol Barron

www.errolbarron.com

##### Bercy Chen Studio LP

www.bcarc.com

##### Boidot Robin Architects

www.j-b-a.eu

##### BPR

www.birdsportchmouthrussum.com

##### Brent Buck

www.twbta.com

##### Casagrande Laboratory

www.clab.fi

##### Laurie Chetwood

www.chetwoods.com

##### Prue Chiles

www.pruechilesarchitects.co.uk

##### Cindy Rendely Architecture

www.crchitecture.com

##### Peter Clash

www.clasharchitects.co.uk

##### Frank Clementi

www.rchstudios.com

##### Jeanne Dekkers

www.jeannedekkers.nl

##### DMAA

www.deluganmeissl.at

##### Dorell.Ghotmeh.Tane

www.dgtarchitects.com

##### East

www.east.uk.com

##### Elemental

www.elementalchile.cl

##### Elliott + Associates Architects

www.e-a-a.com

##### Mathew Emmett

www.mathewemmett.com

##### Fantastic Norway

www.fantasticnorway.com

##### Thom Faulders

www.faulders-studio.com

##### Norman Foster

www.fosterandpartners.com

##### Tony Fretton

www.tonyfretton.com

##### Glowacka Rennie

www.glowacka-rennie.com

##### Sean Godsell

www.seangodsell.com

##### Ivan Harbour

www.richardrogers.co.uk

##### Hawkins\Brown

www.hawkinsbrown.co.uk

##### Carlos Jiménez

www.carlosjimenezstudio.com

##### Eva Jiricna

www.ejal.com

##### Steven Johnson

www.thearchitectureensemble.com

##### Junya Ishigami & Associates

www.jnyi.jp

##### kennedytwaddle

www.kennedytwaddle.com

##### Michael Lehrer

www.lehrerarchitects.com

##### Alistair Lillystone

www.hok.com

##### CJ Lim

www.cjlim-studio8.com

##### Liquidfactory

www.liquidfactory.co.uk

##### John Lyall

www.johnlyallarchitects.com

##### Mackenzie Wheeler

www.mackenziewheeler.co.uk

##### Barrie Marshall

www.dentoncorkermarshall.com

##### Stephen McGrath

www.squireandpartners.com

##### Alessandro Mendini

www.ateliermendini.it

##### Mi5 Arquitectos

www.mi5arquitectos.com

##### Nagan Johnson

www.naganjohnson.co.uk

##### O+A

www.oplusa.nl

##### O'Donnell + Tuomey

www.odonnell-tuomey.ie

##### Office dA

www.officeda.com

##### Chad Oppenheim

www.oppenoffice.com

##### Terry Pawson

www.terrypawson.com

##### Point Supreme Architects

www.pointsupreme.com

##### Paul Raff

www.paulraffstudio.com

##### Carlo Ratti

www.carloratti.com

##### Rocha Tombal

www.rocha.tombal.nl

##### Marc Rolinet

www.rolinet.fr

##### Narinder Sagoo

www.fosterandpartners.com

##### Ken Shuttleworth

www.makearchitects.com

##### sixteen\*(makers)

www.sixteenmakers.com

##### SMAQ

www.smaq.net

##### Smout Allen

www.smoutallen.com

##### Toh Shimazaki

www.t-sa.co.uk

##### Rafael Viñoly

www.rvapc.com

##### Walker Bushe Architects

www.walkerbushe.co.uk

##### Mark West

www.umanitoba.ca/cast\_building

##### Ed Williams

www.fletcherpriest.com

##### Witherford Watson Mann Architects

www.wmarchitects.co.uk

##### Jonathan Woolf

www.contemporaryarchitecture.com

##### Ken Yeang

www.llewelyn-davies-ltd.com

##### YesWeCanArchitecture

www.yeswecanarchitecture.com

##### Yoshihara McKee Architects

www.yoshiharamckee.com