



# 21<sup>st</sup> Century Interiors

Edited by Beth Browne



# 21<sup>st</sup> Century Interiors

Edited by Beth Browne

interior

Published in Australia in 2010 by  
The Images Publishing Group Pty Ltd  
ABN 89 059 734 431  
6 Bastow Place, Mulgrave, Victoria 3170, Australia  
Tel: +61 3 9561 5544 Fax: +61 3 9561 4860  
books@imagespublishing.com  
www.imagespublishing.com

Copyright © The Images Publishing Group Pty Ltd 2010  
The Images Publishing Group Reference Number: 889

All rights reserved. Apart from any fair dealing for the purposes of private study, research, criticism or review as permitted under the Copyright Act, no part of this publication may be reproduced, stored in a retrieval system or transmitted in any form by any means, electronic, mechanical, photocopying, recording or otherwise, without the written permission of the publisher.

National Library of Australia Cataloguing-in-Publication entry:

Author: Browne, Beth.  
Title: 21st century interiors / Beth Browne.  
ISBN: 9781864703658 (hbk.)  
Subjects: Interior architecture.  
Interior decoration—Pictorial works.  
Commercial buildings—Design and construction.  
Dewey Number: 729

Edited by Beth Browne

Production by The Graphic Image Studio Pty Ltd, Mulgrave, Australia  
www.tgis.com.au

Pre-publishing services by Splitting Image Colour Studio Pty Ltd, Australia

Printed on 157gsm Chinese Matt Art by Paramount Printing Company Limited, Hong Kong

# Contents

## Cultural + Hospitality + Retail

---

- |    |   |     |                                     |
|----|---|-----|-------------------------------------|
| 8  | ABC Cooking Studio                              | 62  | Lane Crawford Beijing               |
| 10 | Adour at The St. Regis Washington D.C.          | 66  | Mauboussin US Flagship Store        |
| 14 | Andel's Berlin                                  | 68  | MINT Museum of Toys                 |
| 18 | At Vermilion                                    | 72  | Nobu Dubai                          |
| 20 | Ballard Library and Neighborhood Service Center | 76  | Pacific Ink Tattoo Studio           |
| 24 | Banq  | 78  | Primehouse Restaurant               |
| 28 | Benjamin Moore Showrooms                        | 80  | PVR Mulund                          |
| 32 | Bijlmer Park Theatre                            | 84  | RED Prime Steak                     |
| 36 | bluprint  | 88  | Scandinave Les Bains Vieux-Montréal |
| 38 | Carju Rajah Esthetic Salon, Keio Plaza Hotel    | 92  | Sculpture Therapy Centre            |
| 40 | Dolce Vita Porto                                | 94  | Segundo Muelle Restaurant           |
| 42 | Elixir De Beaute                                | 96  | Smyth Tribeca                       |
| 44 | Five Sixty by Wolfgang Puck                     | 100 | The Source by Wolfgang Puck         |
| 48 | FUEL at Chesapeake                              | 102 | Tiffany's Wall Street               |
| 50 | Herman Miller Canada                            | 106 | WakuWaku Hamburg                    |
| 54 | Hotel Romeo                                     | 110 | Yew restaurant + bar                |
| 56 | Jardin de Jade                                  | 114 | YMCA Renaissance Center             |
| 60 | Kiribiri Lounge Café                            |     |                                     |

## Commercial + Office

---

- |     |   |     |   |
|-----|---|-----|---|
| 118 | Adobe San Francisco                                       | 184 | Lloyd's Reinsurance Company (China) Ltd                     |
| 120 | Agnico-Eagle Mines Offices                                | 186 | Meerkin & Apel Lawyers                                      |
| 122 | AMP Offices   | 190 | Middletons  |
| 126 | APRA_AMCOS Office   | 194 | National Foods  |
| 130 | Architectural Design Studio                               | 196 | Nokia Headquarters  |
| 132 | ASIC (Australian Securities & Investments Commission)     | 198 | NORTH Adverstising  |
| 134 | Barclays Global Investors                                 | 200 | Paul, Hastings, Janofsky & Walker, LLP                      |
| 138 | Baroda Ventures   | 202 | Registrar-Recorder/County Clerk Elections Operations Center |
| 140 | Bayside Project Management Office                         | 204 | RMIT Student Union  |
| 142 | Bishop's See South Lobby                                  | 206 | Robert Mills – Grattan Street Office                        |
| 144 | bmf Advertising   | 210 | SOHO China Corporate Headquarters                           |
| 146 | Boy Scouts of America, Orange County Council Headquarters | 212 | Sorrento Science Complex (SSC)                              |
| 148 | CHC Studio  | 214 | Stephen Hart Studio   |
| 150 | COFRA/Good Energies North American Headquarters Office    | 218 | Studio Ippolito Fleitz Group                                |
| 152 | Confucius Institute                                       | 222 | Suters Head Office  |
| 154 | Edmunds.com Headquarters                                  | 226 | The Juggernaut Offices                                      |
| 158 | Elwood Clothing Head Office                               | 230 | The White Agency  |
| 162 | Fama Consulting Office                                    | 234 | Volkswagen Group of America US Headquarters                 |
| 164 | Global Management Consulting Firm                         | 238 | WGV Versicherungen – Customer Service Centre                |
| 166 | Hambly and Woolley Studio                                 | 240 | Wittlinger Hahn Stern Radiology                             |
| 170 | Hatch Associates  | 244 | Yello Branding Agency                                       |



# Hambly and Woolley Studio

Toronto, Ontario, Canada

Cindy Rendely Architexture

The objective was to create a modest but elegant office for a boutique art and graphic design studio that would reflect and enhance the firm's reputation for creating clear, thoughtful and lighthearted work. The architect met this brief by defining the interior with colour and flaunting a minimal palette of inexpensive materials. In particular, recycled wood was treated in an unusual fashion to reflect the firm's eco-awareness, creativity and its ability to do a lot with a little.

The 370-square-metre studio office is situated on the top floor of a historic warehouse building in downtown Toronto, with limited access to natural light due to surrounding buildings on three sides. Limited to only essential elements, the aim was to give all millwork, furnishing, light fixtures, doors and windows a sculptural appearance and to establish a blank backdrop for the studio's own work and its collection of globes.

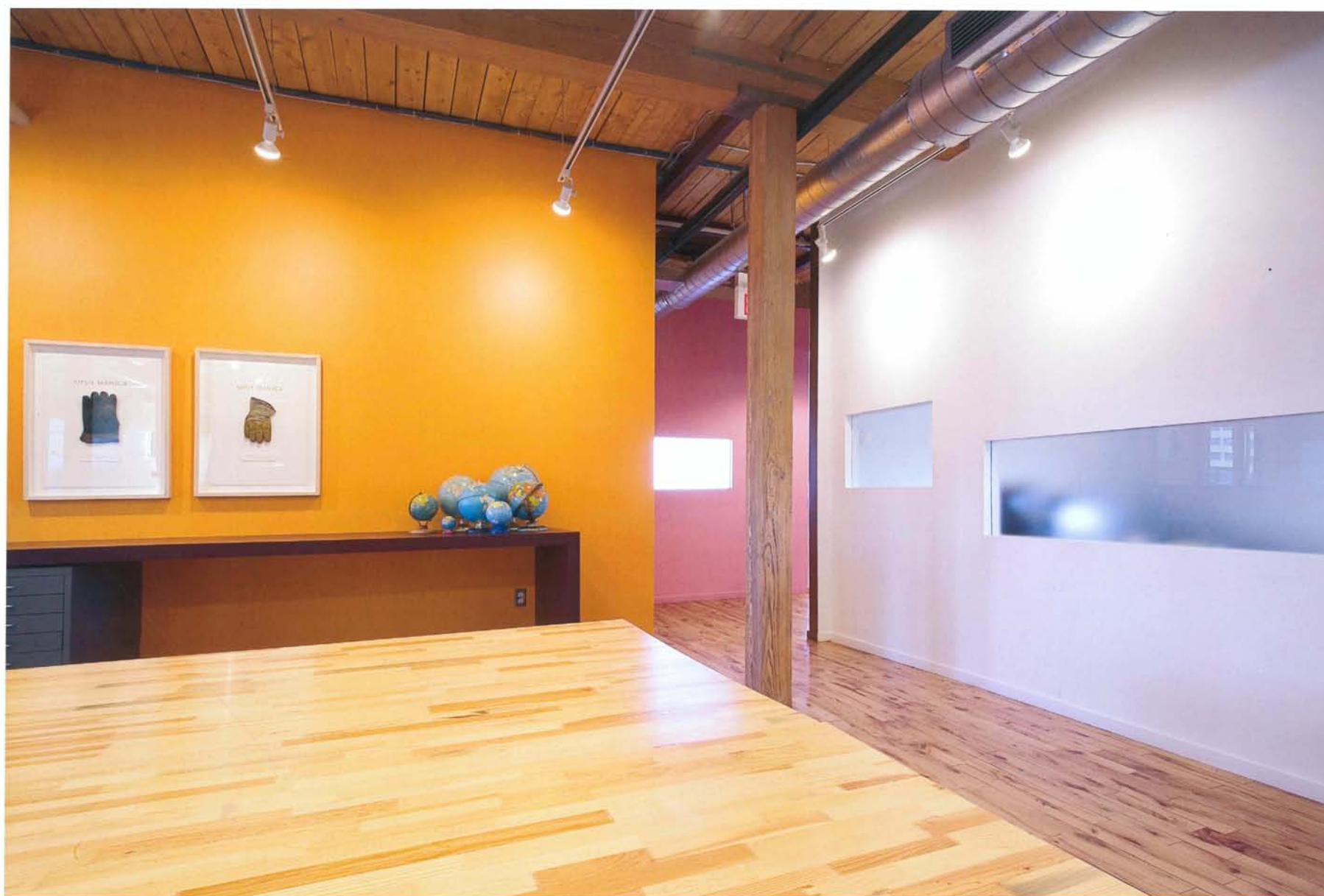
The space was stripped to its essential elements, exposing ductwork and timber floors, ceilings and beams. Perimeter offices were created and punctured with frosted windows at playful heights, allowing natural light to penetrate into the heart of the floor and affording a sense of intrigue and visual openness.

A reduced palette of inexpensive materials – paint, laminate and reclaimed wood – define the interior's warm and casual aesthetic and imbue the space with a graphic quality. The unusual hues of the colour-splashed walls were drawn from the firm's logo. Patchwork wood millwork, tabletops and doors were simply varnished to expose their natural beauty, complementing the building's original features. Inward-looking and calmly detailed, the office's unity and compositional clarity is derived from good proportions, intuitive circulation and adjacencies, with a blurring of plinth, edge, wall and furniture.

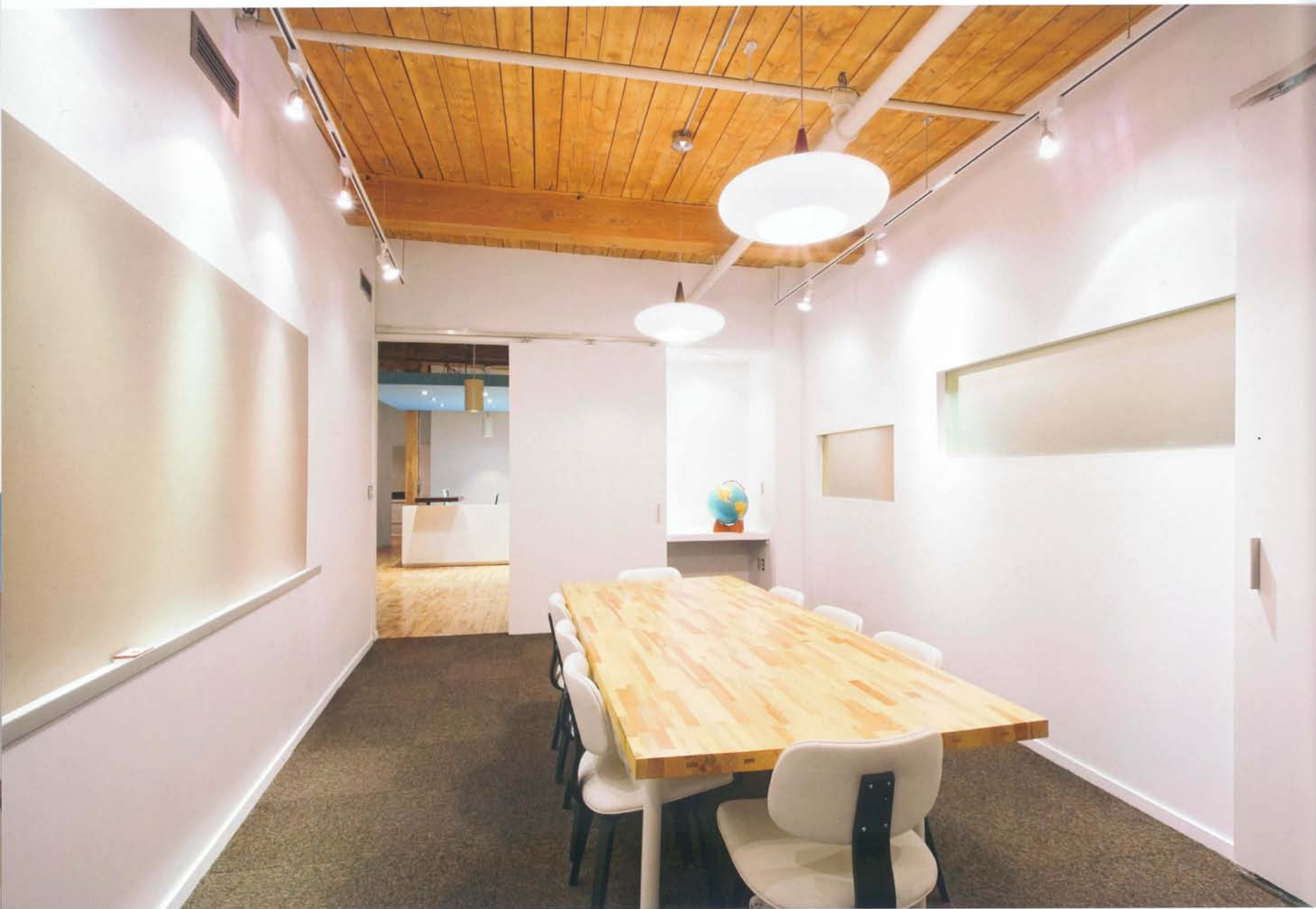


1 Reception

2 Central layout space









3 Meeting room

4 Staff kitchen

5 Layout area with view to pin-up wall

**Photography: Tom Arban**

